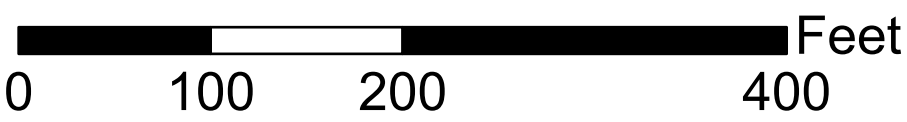


Stark County Auditor's Tax Map

Scale: 1 inch = 100 feet

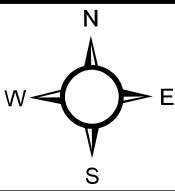
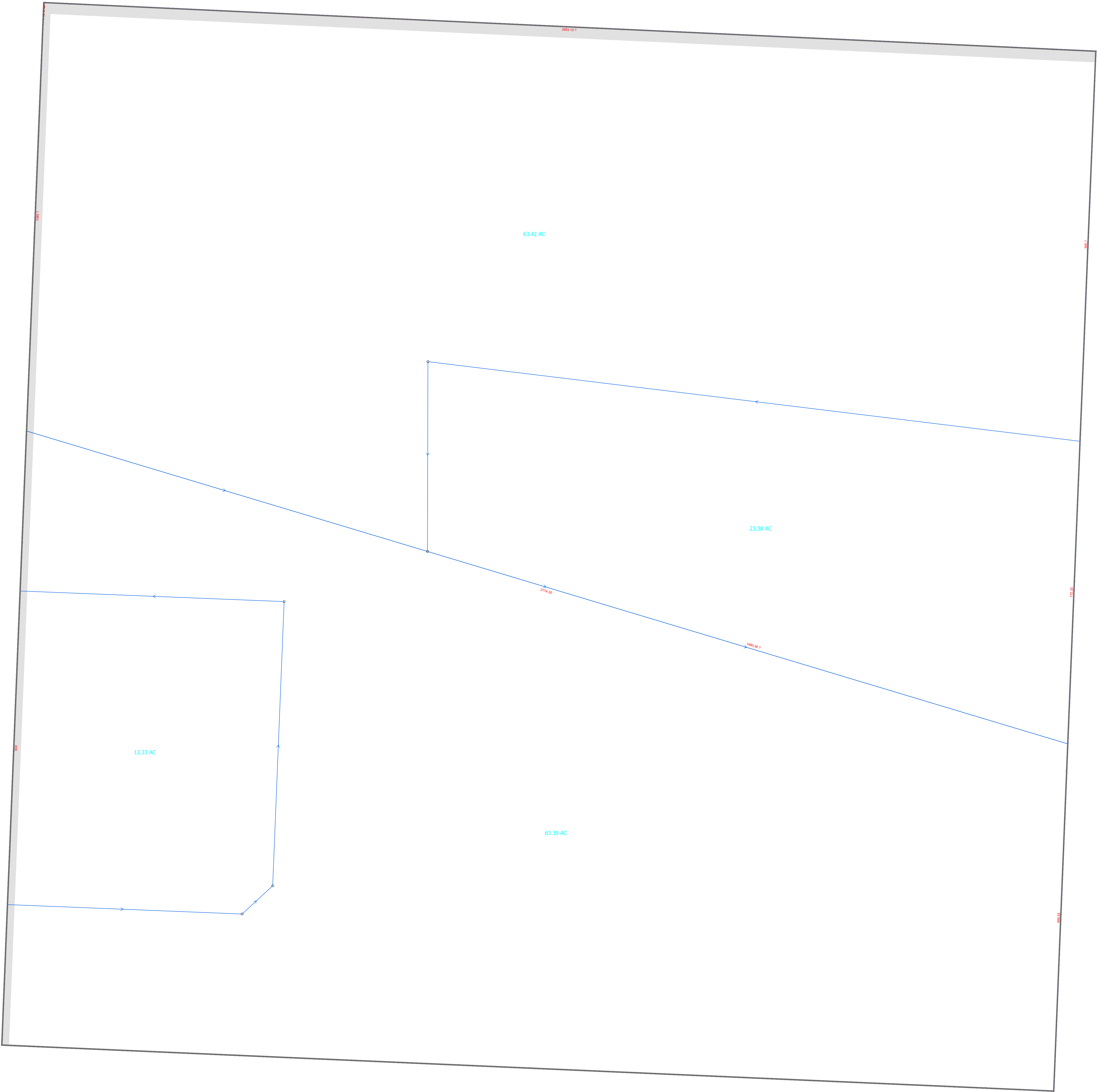


Tax District:
00690

Tuscarawas Twp.

Section: 33 Quarter: NE

TUS_0295S	TUS_028SW	TUS_028SE	TUS_027SW	TUS_027SE
TUS_032NE	TUS_033NW	TUS_033NE	TUS_034NW	TUS_034NE
TUS_032SE	TUS_033SW	TUS_033SE	TUS_034SW	TUS_034SE



Legal Disclaimer: Public information data is furnished by the Stark County Auditor's Office, and must be accepted and used by the recipient with the understanding that the Stark County Auditor's Office makes no warranties, expressed or implied, concerning the accuracy, completeness, reliability, or suitability of this data. Furthermore, the Stark County Auditor's Office assumes no liability whatsoever associated with the use or misuse of such data.
Source: Stark County Auditor's GIS Department 330-451-7193 <http://www.starkcountyohio.gov/auditor> Projection: State Plane Ohio North NAD 1983ft. Created: 9/8/2025

Map Abbreviation:
TUS_033NE