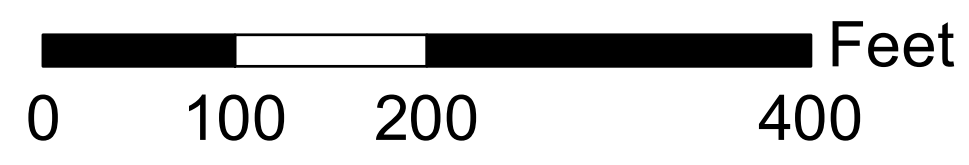


Stark County Auditor's Tax Map

Scale: 1 inch = 100 feet



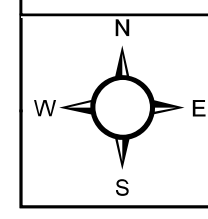
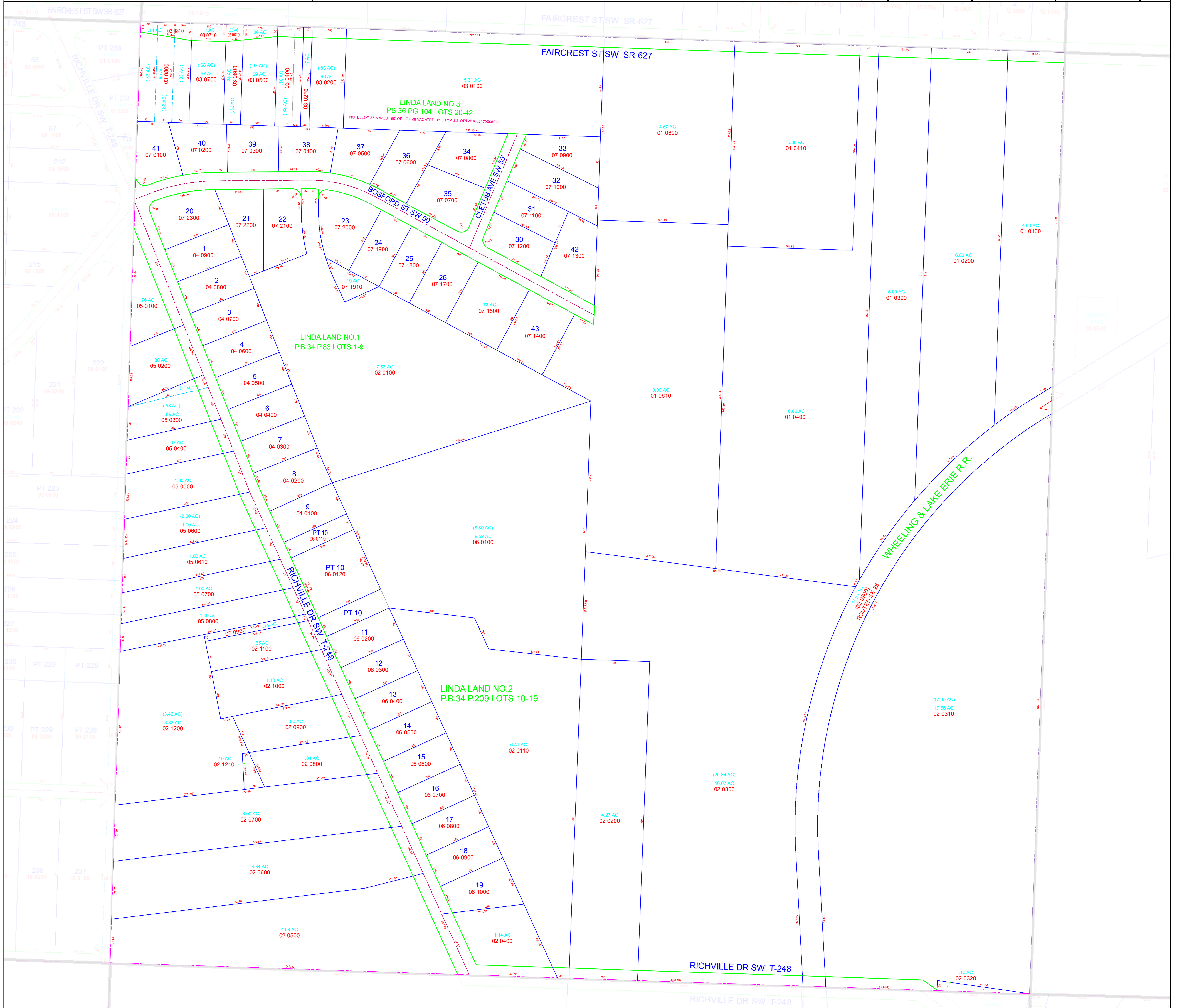
Tax District:
00400

Perry Twp.

Township 10 Range 9

Section: 26 Quarter: SW

R_027NW	PER_027NE	PER_026NW	PER_026NE	PER_025E
PER_027SW	PER_027SE	PER_026SW	PER_026SE	PER_025SW
R_034NW	PER_034NE	PER_035NW	PER_035NE	PER_036N



Legal Disclaimer: Public information data is furnished by the Stark County Auditor's Office, and must be accepted and used by the recipient with the understanding that the Stark County Auditor's Office makes no warranties, expressed or implied, concerning the accuracy, completeness, reliability, or suitability of this data. Furthermore, the Stark County Auditor's Office assumes no liability whatsoever associated with the use or misuse of such data.
Source: Stark County Auditor's GIS Department 330-451-7193 <http://www.starkcountyohio.gov/auditor> Projection: State Plane Ohio North NAD 1983ft. Joe Guzi Date: 3/17/2022

Map Abbreviation:
PER_026SW