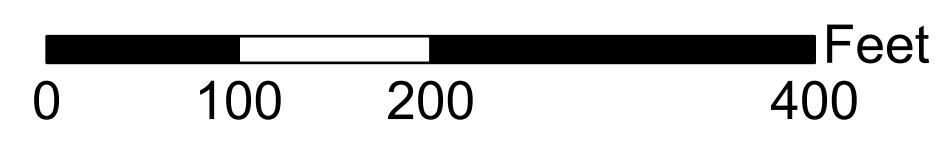


Stark County Auditor's Tax Map

Scale: 1 inch = 100 feet

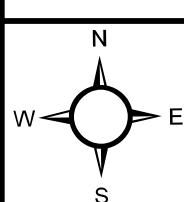
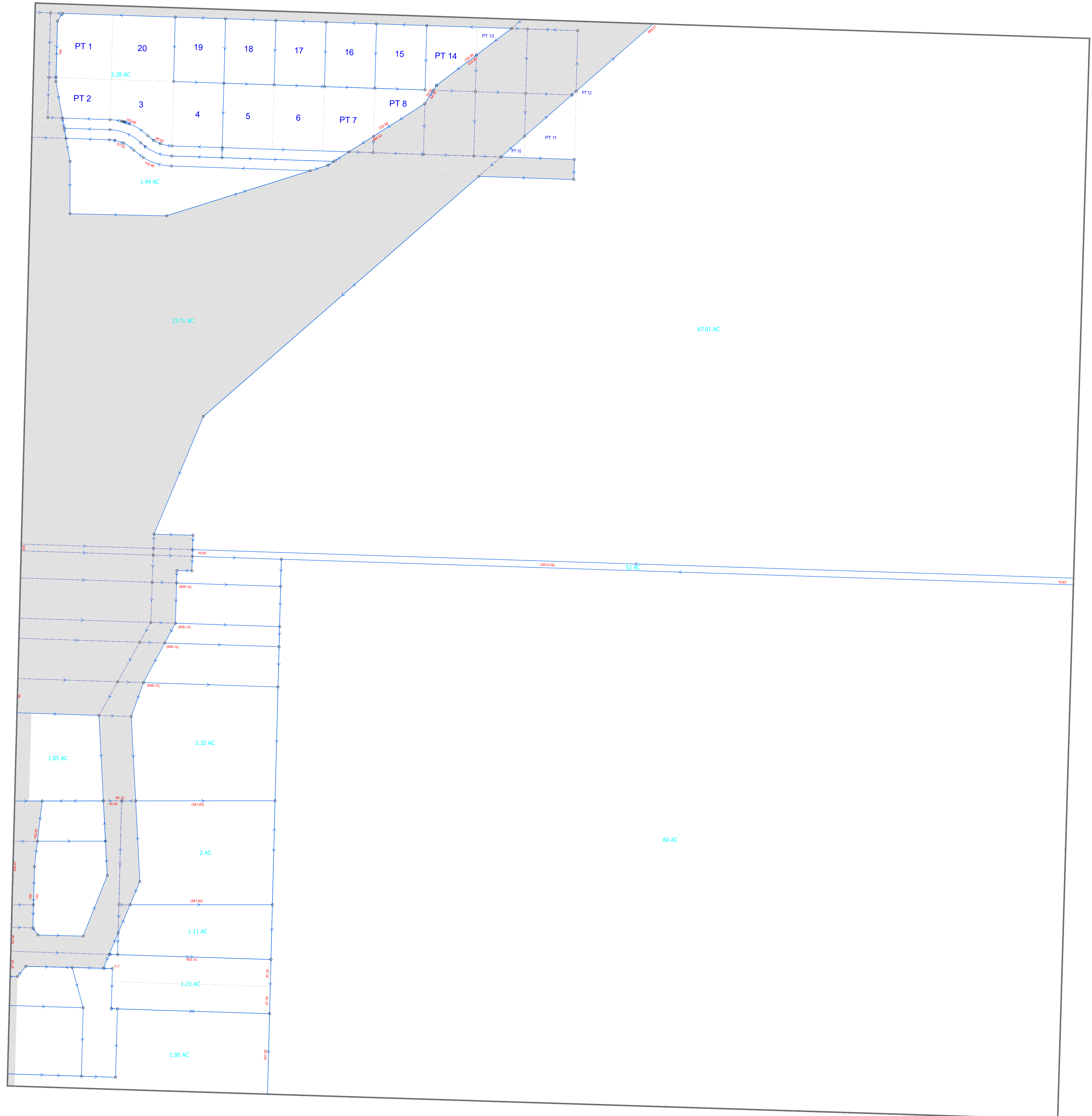


Tax District:
00300

Nimishillen Twp.

Section: 16 Quarter: SE

NIM_017NE	NIM_016NW	NIM_016NE	NIM_015NW	NIM_015NE
NIM_017SE	NIM_016SW	NIM_016SE	NIM_015SW	NIM_015SE
LOU_004A	LOU_005A	NIM_021NE	LOU_006A	NIM_022NW
NIM_020NE	NIM_021NW			NIM_022NE



Legal Disclaimer: Public information data is furnished by the Stark County Auditor's Office, and must be accepted and used by the recipient with the understanding that the Stark County Auditor's Office makes no warranties, expressed or implied, concerning the accuracy, completeness, reliability, or suitability of this data. Furthermore, the Stark County Auditor's Office assumes no liability whatsoever associated with the use or misuse of such data.
Source: Stark County Auditor's GIS Department 330-451-7193 <http://www.starkcountyohio.gov/auditor> Projection: State Plane Ohio North NAD 1983ft. Created: 11/24/2025

Map Abbreviation:
NIM_016SE