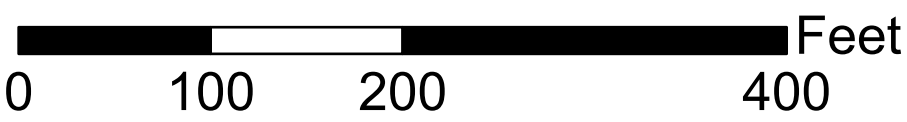


Stark County Auditor's Tax Map

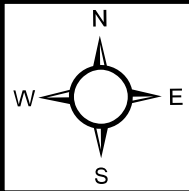
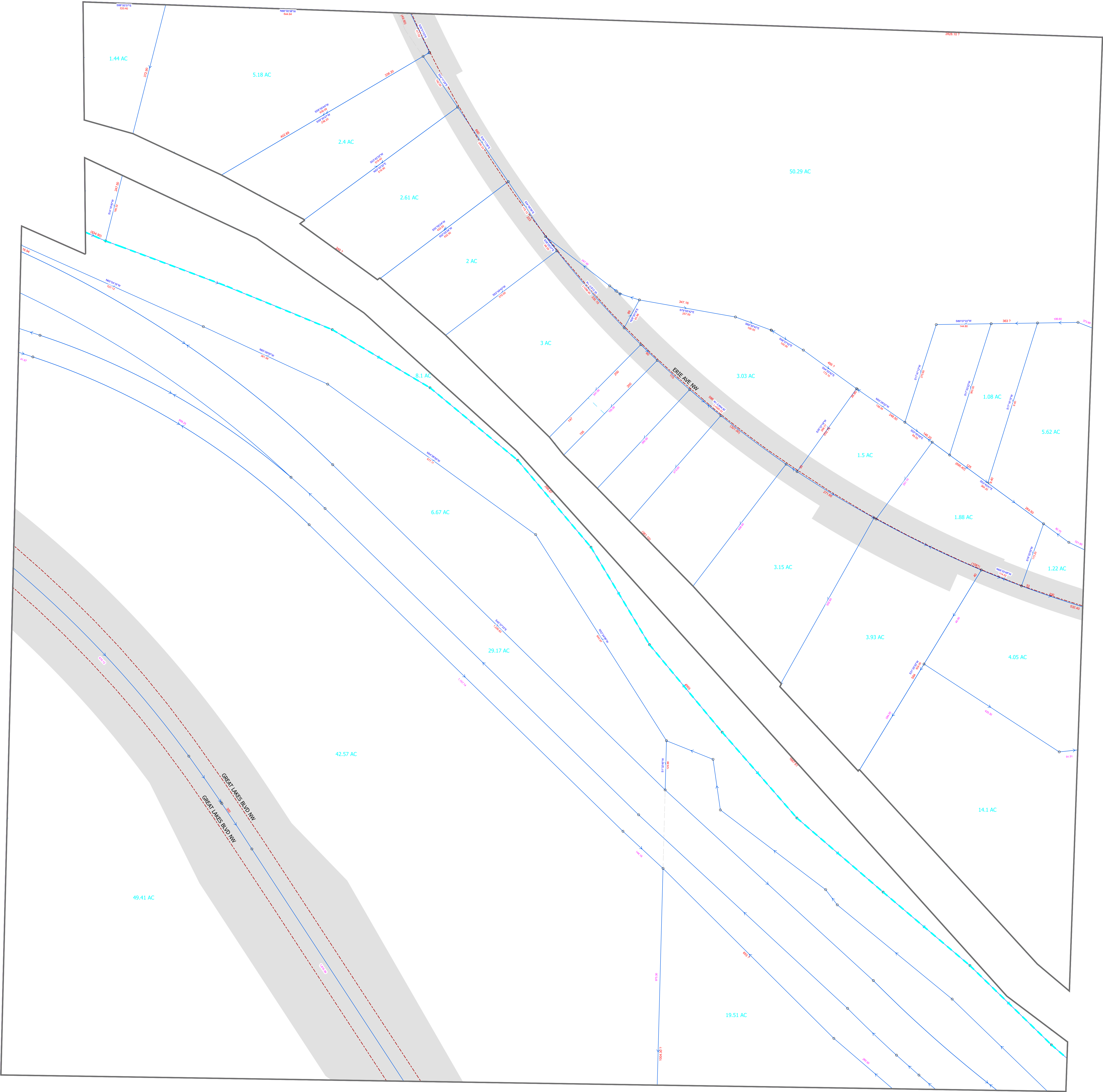
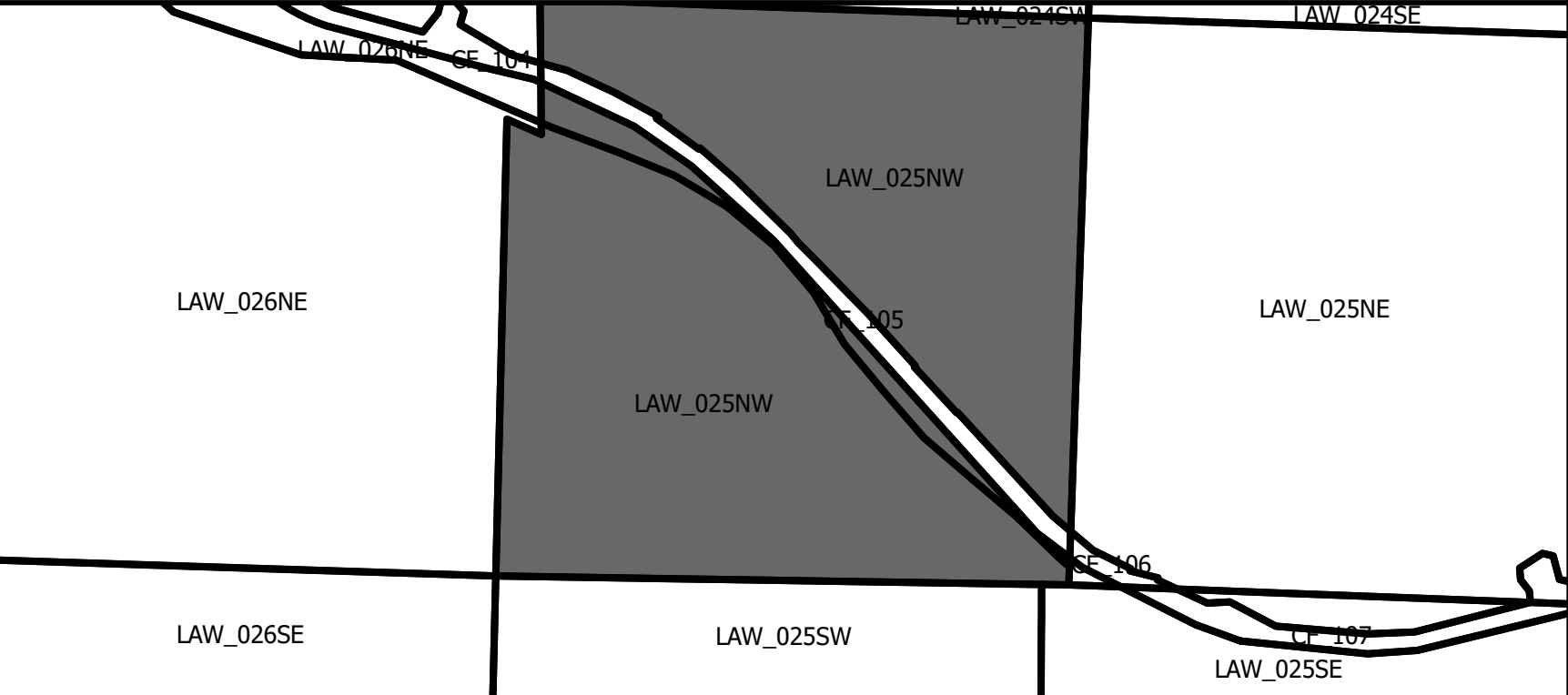
Scale: 1 inch = 100 feet



Tax District:  
00210

Lawrence Twp.

Section: 25 Quarter: NW



Legal Disclaimer: Public information data is furnished by the Stark County Auditor's Office, and must be accepted and used by the recipient with the understanding that the Stark County Auditor's Office makes no warranties, expressed or implied, concerning the accuracy, completeness, reliability, or suitability of this data. Furthermore, the Stark County Auditor's Office assumes no liability whatsoever associated with the use or misuse of such data.  
Source: Stark County Auditor's GIS Department 330-451-7193 <http://www.starkcountyohio.gov/auditor> Projection: State Plane Ohio North NAD 1983ft. Created: 6/18/2025

Map Abbreviation:  
**LAW\_025NW**