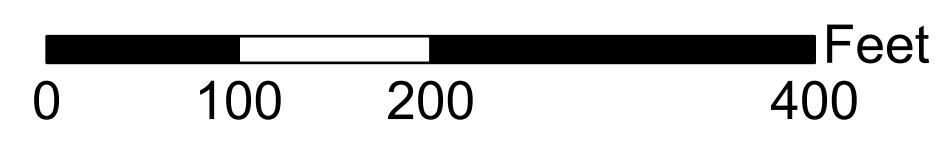


Stark County Auditor's Tax Map

Scale: 1 inch = 100 feet

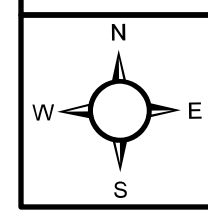
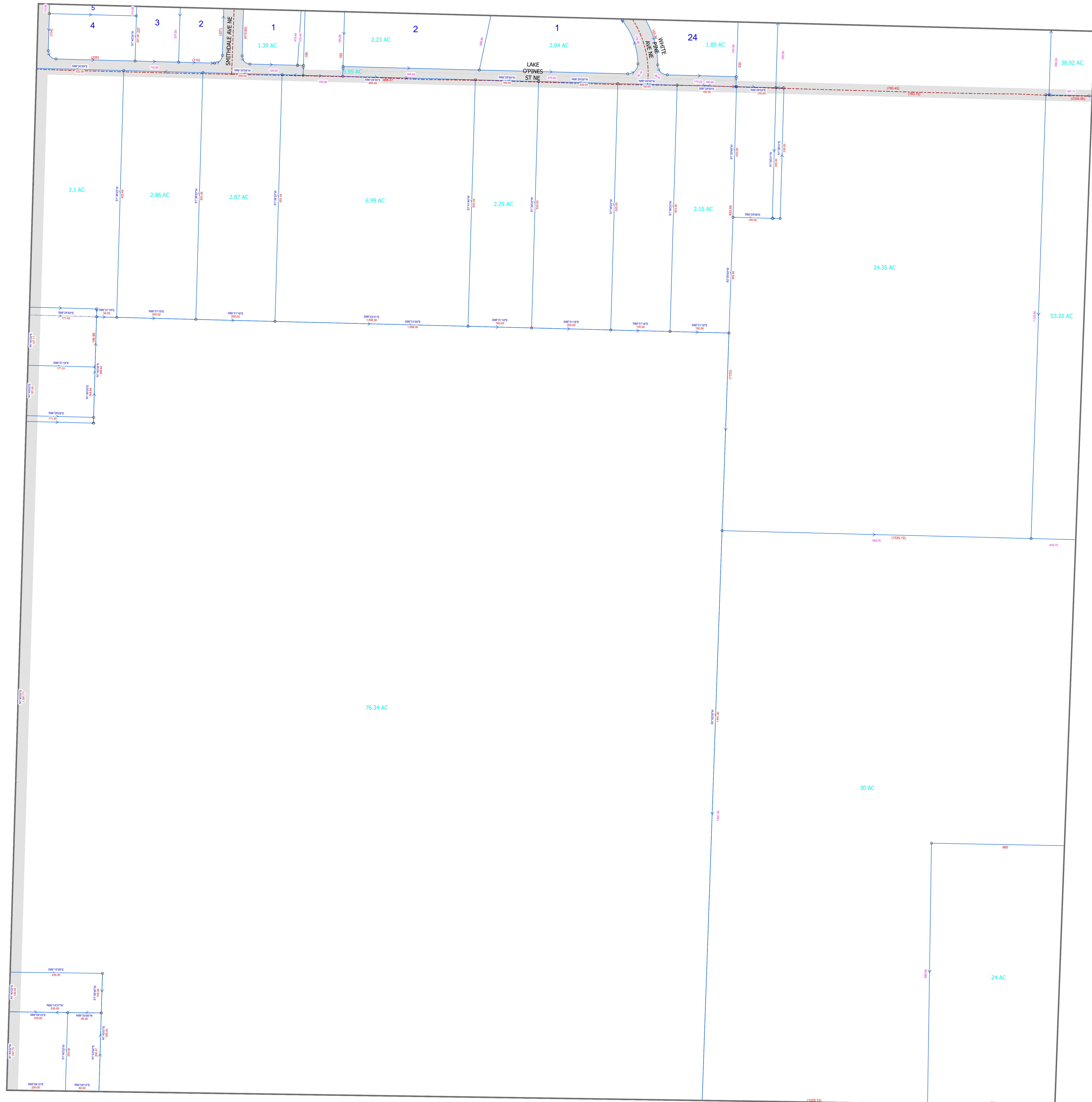


Tax District:
00160

Lake Twp.

Section: 27 Quarter: SW

LAK_028NW	LAK_028N	LAK_028NE	LAK_027NW	LAK_027NE	LAK_026NW
LAK_028SW	LAK_028SE	LAK_027SW	LAK_027SE	LAK_026SW	LAK_026SE
LAK_033NW	LAK_033NE	LAK_033SE	LAK_034NW	LAK_034NE	LAK_035NW



Legal Disclaimer: Public information data is furnished by the Stark County Auditor's Office, and must be accepted and used by the recipient with the understanding that the Stark County Auditor's Office makes no warranties, expressed or implied, concerning the accuracy, completeness, reliability, or suitability of this data. Furthermore, the Stark County Auditor's Office assumes no liability whatsoever associated with the use or misuse of such data.
Source: Stark County Auditor's GIS Department 330-451-7193 <http://www.starkcountyohio.gov/auditor> Projection: State Plane Ohio North NAD 1983ft. Created: 6/18/2025

Map Abbreviation:
LAK_027SW